



# Mare Orientale

*... this most astounding impact basin is only partially seen*

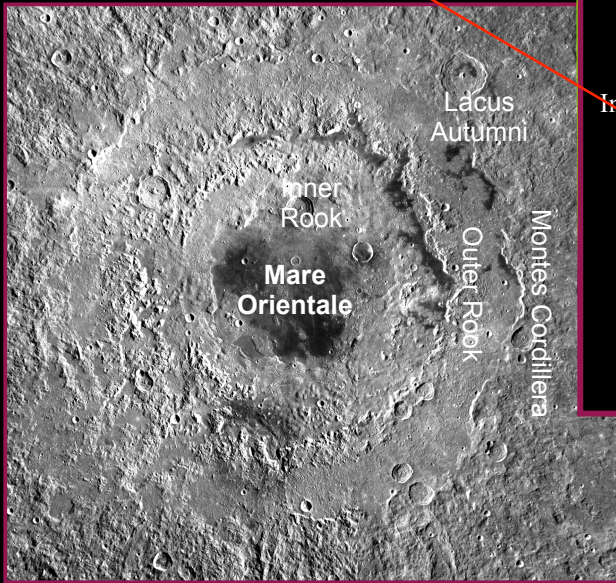
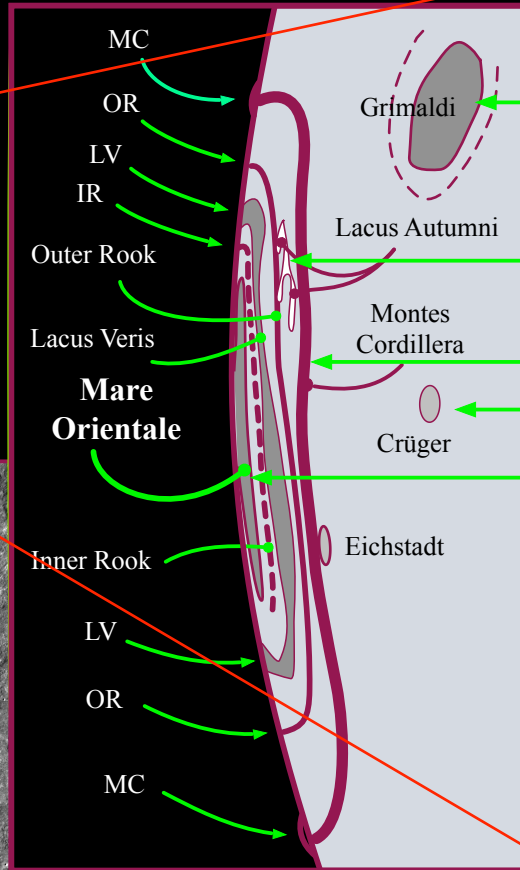


image: NASA/GSFC/ Arizona State University

## Mare Orientale

Best seen in 2025  
*the mornings around May 18, June 18,  
and July 16*

A good viewing of Mare Orientale requires that the Moon be at or near maximum western libration. This happens on three, four, or five days in some, but not all months. Of course, it should not hide in the lunar night, which immediately eliminates fifteen days each month. The three mornings leading up to new Moon are also poor times because the waning thin crescent lies too close to the horizon to give a sharp enough image for a clear, meaningful view.

As a result, opportunities for studying Mare Orientale are infrequent, occurring on fewer than twenty days each year. Generally, four months running present three, four, or five good opportunities each, followed by a string of nine or ten months that present no suitable occasions for viewing it. And then there is the weather!

Identifying Orientale's fascinating features demands steady seeing and moderate magnification.