

# Open Star Clusters



## A Guide for the Open Star Cluster Observing Program

Published by the Astronomical League



# Open Star Clusters



## A Selection of Open Star Clusters

Written by  
Benjamin Jones

Edited By  
Aaron Clevenson



Astronomical League

## Open Star Clusters

Copyright © 2025 Second Edition, Astronomical League

Second Printing, First Edition 2007

First Printing, First Edition 2005

Published by the Astronomical League

Printed by the Humble Independent School District and the Insperity Observatory

All rights reserved. No part of this publication may be reproduced or utilized in any form or by any means, electronic or mechanical, including photocopying, recording, or by an information storage and retrieval system without permission in writing from the Astronomical League. Limited permission is granted for the downloading, reproducing, and/or printing of the material for personal use.

Astronomical League  
9201 Ward Parkway, Suite 100  
Kansas City, MO 64114  
816-DEEP SKY  
[www.astroleague.org](http://www.astroleague.org)

References: <http://www.geocities.com/ariane1au/Page030.htm>

*Star Clusters* by Brent A. Archinal and Steven J. Hynes, published by Willmann-Bell Publishing, 2003.

Pictures under the Trumpler Classification examples referenced to the Digital Sky Survey. The Digitized Sky Surveys were produced at the Space Telescope Science Institute under U.S. Government grant NAG W-2166. The images of these surveys are based on photographic data obtained using the Oschin Schmidt Telescope on Palomar Mountain and the UK Schmidt Telescope. The plates were processed into the present compressed digital form with the permission of these institutions.

Cover photo: M45 Courtesy of Russell Croman

Title Page photo: NGC 6520 (left) and B 86 (right)

## Contents

|   |    |
|---|----|
| Acknowledgements .....                          | iv |
| Preface .....                                   | v  |
| Observing Program Guidelines.....               | 1  |
| The Trumpler Classification System .....        | 2  |
| History & Description of Open Clusters.....     | 3  |
| Trumpler Classification System.....             | 5  |
| Examples of Trumpler Classifications.....       | 6  |
| Open Cluster Catalogs.....                      | 7  |
| Original List: 125 Selected Objects.....        | 8  |
| Southern List: Additional Selected Objects..... | 12 |
| Observation Log.....                            | 15 |

## Acknowledgements

The author would like to thank the following people for their help with this program. Without their assistance, this program would have never been created.

Sue French, Dr. Brent Archinal, John Wagoner, Mikkel Stein, Becky Ramotowski, and Michael Hotka.

I want to thank Russell Croman for providing permission to use his astrophotography in this program. Russell's pictures of M 45 (cover), NGC 6520, M11, and M46 add color to this manual. To see more of Russell's pictures, please visit his website at [www.rc-astro.com](http://www.rc-astro.com)

I want to personally thank Charlie Warren for his picture of the Double Cluster in Perseus and his picture of the M 35/NGC 2158 region which is the background for the logo and lapel pin.

I would also like to express my appreciation to Brent Archinal, Steven Hynes and Willmann-Bell for providing permission to use the right ascension, declination, magnitude, and cluster size data from the book *Star Clusters* for all of the objects in Open Cluster Observing Program.

*Star Clusters* is an excellent resource to build upon and expand your experience with the Open Cluster Observing Program. It is both a descriptive text of the historical study and astrophysics of some of the youngest (open clusters) and oldest (globular clusters) objects that populate the Universe along with the most up-to-date catalog of these objects in existence — an effort that took more than a decade to complete. It is the only book that definitively catalogs open star clusters, globular clusters, and asterisms. Star clusters have a history of multiple identifications. Overall 5,045 objects were matched against 13,949 different names using detailed observing logs and other historic sources. This information has been skillfully incorporated into the text making *Star Clusters* an observing handbook suitable for anyone interested in these fascinating objects.

For more information on this book or to purchase one for yourself, please go to Willmann-Bell's website at <http://www.willbell.com>

Lastly, I want to thank my grandmother Barbara Wilson for giving me the tools to see the universe and for her guidance when I needed it most. Without her help and support, this program couldn't have been made.

—*Benjamin Jones*

## Preface

The Astronomical League has had observing programs or “clubs” for observing various types and classes of objects, starting with their venerable Messier Club in the mid 1960’s. After an initial interest in astronomy, many an amateur became hooked while accepting the challenge of observing the objects in the Messier or other club lists. The League has thereby provided an invaluable service, generating and maintaining through these clubs and other programs an interest in astronomy, both in North America and for that matter worldwide. I myself recall with great fondness doing a Messier Marathon in March of 1980, which (along with some earlier observations of a few objects missed in the Marathon) qualified me for an honorary Messier Club certificate (no. 449 of 1980 May 2), and how that spurred me to continue observing.

What you hold here is the core material for a new club, the Open Clusters Observing Club of the Astronomical League. This club, organized by Benjamin Jones under the auspices of the League, once again highlights a significant class of astronomical objects.

Open clusters are of tremendous importance to the science of astronomy, if not to astrophysics and cosmology generally. Star clusters serve as the “laboratories” of astronomy, with stars now all at nearly the same distance and all created at essentially the same time. Each cluster thus is a running experiment, where we can observe the effects of composition, age, and environment. We are hobbled by seeing only a snapshot in time of each cluster, but taken collectively we can understand their evolution, and that of their included stars. These clusters are also important tracers of the Milky Way and other parent galaxies. They help us to understand their current structure and derive theories of the creation and evolution of galaxies. Just as importantly, starting from just the Hyades and the Pleiades, and then going to more distance clusters, open clusters serve to define the distance scale of the Milky Way, and from there all other galaxies and the entire universe.

However, there is far more to the study of star clusters than that. Anyone who has looked at a cluster through a telescope or binoculars has realized that these are objects of immense beauty and symmetry. They have been revered not just in astronomy, but also in literature and poetry through the ages. Alfred, Lord Tennyson (1809-1892) wrote in *Locksley Hall* (1842) some of the most beautiful words regarding any star cluster:

“Many a night I saw the Pleiads, rising thro' the mellow shade,  
Glitter like a swarm of fire-flies tangled in a silver braid.”

Whether a cluster like the Pleiades seen with delicate beauty with the unaided eye or in a small telescope or binoculars, or a cluster like NGC 7789 whose thousands of stars are seen with overpowering wonder in a large telescope, open clusters can only bring awe and amazement to the viewer.

These sights are available to all. Whether a large or small telescope is used, whether one observes with only binoculars or the unaided eye, or whether one observes from a dark sky location or a light-polluted city, these clusters are there waiting on any clear night for us to take a look.

It is an honor to have been asked by Benjamin Jones to write this forward. Ben tells me that much of his reason for doing so is his reliance for data and other information on open clusters on the book *Star Clusters* (Willmann-Bell, Inc., Richmond, VA) by my co-author Steven Hynes and me. That book evolved from Steve's and my long interest as amateur astronomers in observing and understanding star clusters, and not incidentally from my interest in improving astronomical catalogs, particularly of clusters. We provided general information and history on the subject of star clusters and as best we could a summary of the current state of the field of study. We also provided what we believe to be the most extensive and accurate catalog of star clusters ever created. Not only did we check the identifications and positions – and in a large number of cases other data – for all the included objects, but an integral part of that catalog is a substantial set of notes on various objects of interest. We covered the details of a wide sample of objects of astrophysical interest. We also corrected and covered the identification of hundreds of clusters. Many of the object notes are perhaps best described as detective stories as each ambiguous or incorrect identity was tracked down.

There is always more to do of course. Although we believe our work summarized the state of current research on star clusters and fundamentally improved the identification and positional information for clusters, further minor improvements can always be made. New theories remain to be written and fundamental physical data can always be improved on – or even collected for the first time in the case of some clusters. Perhaps you, the reader, may someday use the information we have provided in order to extend our knowledge of these objects even further. Perhaps you will provide new information with your own images or other measurements, or make some fundamental discovery like an interesting previously unknown asterism or a new physical cluster. However, the real objective, the ultimate goal of our book – and I now believe this League observing club – is to lead you and others to have an interest in and to observe these marvels, these spectacular wonders of the night sky.

Brent A. Archinal  
Flagstaff, Arizona  
May 31, 2005



# Observing Program Guidelines

The Astronomical League



Open Cluster Observing Club

The Open Cluster Observing Program is open to any Astronomical League member in good standing, either through an affiliated club or through a Member-at-Large membership.

The nature of this program is not just observation of the selected open clusters, but the ability to classify them based on the Trumpler classification system and the ability to sketch selected clusters. This, overall, enhances the observing experience and allows even the most advanced observer to find detail in these clusters that is normally Overlooked.

There are two levels within the Open Cluster Observing Program:

## Basic Program:

- Observe any 100 of the 125 open clusters on the provided list.
- Sketch any 25 of the 100 open clusters that you observe.
- Classify all 100 observed clusters under the Trumpler classification system.
- All observing techniques may be used under the basic program. Including go-to, computer controlled, star hopping, digital setting circles, etc.

## Advanced Program:

- Observe all 125 of the open clusters on the provided list.
- Sketch any 50 of the open clusters that you observe.
- Classify all 125 observed clusters under the Trumpler classification system.
- All observing techniques may be used under the advanced program. Including go-to, computer controlled, star hopping, digital setting circles, etc.

Those completing the Basic Program who want to move up to the Advanced Program must observe an additional 25 open clusters that were not observed under the Basic Program. Furthermore, the observer must sketch an additional 25 open clusters that had not been previously sketched as part of the Basic Program.

# The Trumpler Classification System

The observer will be required to classify all of the open clusters observed in this program under the Trumpler classification system. Examples of some of the official Trumpler classifications are given on page 6. By classifying all of the open clusters, the observer will be developing a better understanding of their differences and appearances.

**The Sketch:** The observer is also required to make a sketch of any 25 (the basic program) or 50 (the advanced program) clusters they observe. The sketch does not have to be a work of art, but it does need to accurately depict the cluster. Since open clusters are made of stars, a drawing of small dots in a pattern of the cluster is all that is needed.

Because the goal of this program is to have the observer see the differences in the clusters, it is highly recommended that the same telescope and similar power be used for all of the clusters. By doing this, it will ensure that the differences that are seen are cluster differences and not power differences.

**Observations:** For each object, the observer is required to record the location, date & time, seeing, transparency, aperture, power, a brief description of the observed object, the Trumpler classification, and a sketch for any 25 (basic) or 50 (advanced) clusters from the list; a sample is on page 11. This format follows that of most Astronomical League observing programs. If the format that you use is more detailed, just make sure that the basic requirements are recorded like they are on page 11.

**Awards:** Once you have met the above requirements, send in your observing logs, program completed (basic or advanced), name, address, email, affiliation (club association or member-at-large), and phone number to the administrator of this club. Your Astronomical League Awards representative may send in your logs to the administrator as well. Make sure you send copies of your logs and not originals because the administrator of this club will not mail back your logs.

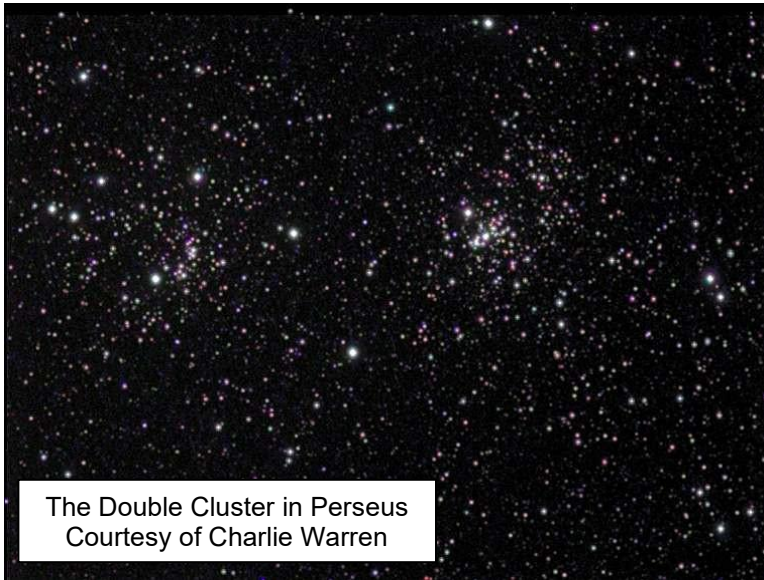
The administrator of this club will mail the observer a certificate, letter, and lapel pin when the basic or advanced program has been completed, unless the observer requests that the award be mailed to the Awards Coordinator of their club for presentation at a club meeting.

The individuals completing the advanced program will receive special recognition on their certificate. Furthermore, only the Advanced Program awards will count toward the Master Observer Award. Keep this in mind when picking what to observe.

Observers completing either the Basic Program or Advanced Program using only star-hopping techniques should indicate so in their letter to the program coordinator. These individuals will receive special recognition on their certificate and cover letter.

## History & Description of Open Clusters

For centuries our ancestors looked at the heavens with a great familiarity of the night sky. The Milky Way streaming across the sky, with little patches of loosely connected stars dotting the scene. As ancient societies observed more, and integrated their knowledge of the heavens into their culture and mythology, the patches of light were given names; the Pleiades in Taurus, Praesepe in Cancer, the Hyades in Taurus, and the glorious Double Cluster in Perseus. These names became stories, folklore, to be passed down from generation to generation.



With the advent of the telescope around 1608, the shroud of mystery around these patches of light began to unravel. Galileo Galilei (1564-1642) may have been the first to observe open star clusters through a telescope, believing that every nebula in the sky could be resolved into individual stars. In his opinion, the galaxy can be resolved into stars grouped together in many clusters. For about 200 years this theory of the galaxy stood, until William Herschel proved it wrong when he was unable to resolve the apparent central star of NGC 1514.

Charles Messier (1730-1817) in his revolutionary catalog, recorded many of the open star clusters that had been unknown for so long. Out of the 30 open clusters that Messier recorded in his catalog, 8 or more were discovered by Messier himself. When William Herschel (1738-1822) received a copy of Messier's published catalog, he began a search of his own. Herschel, who discovered some 2300 new objects, hypothesized on the astrophysics of open star clusters. His rationale was that open clusters were made of similarly massive stars that attracted each other when in close proximity. Even if his theory was not correct, he was the first person to base his idea on observation of the objects.

Today, the most complete catalog of open clusters is the 5<sup>th</sup> Edition of the *Lund Catalogue of Open Cluster Data*, which contains information on over 1100 objects. It is estimated that the Milky Way galaxy contains 40,000 open clusters.

As information on open clusters increased, classifying them became a priority. One of the earliest classification systems was developed by Harlow Shapley in 1930; it had seven components:

- a. **Field Irregularities:** This class deals with irregular star counts and associations. They differed than the normal distribution of stars, being more closely concentrated yet not enough to be studied.
- b. **Star Associations:** This category contains clusters that have distantly spaced stars sharing the same motion. The Ursa Major group is a member of this class.

- c. **Very Loose and Irregular Clusters:** These are very large and scattered clusters. Examples of this class include the Pleiades and Hyades clusters, and the Alpha Persei group.
- d. **Loose Clusters:** These clusters have very small amounts of stars and appear loose. Shapley gave M21 and M34 as examples of this type.
- e. **Intermediate Rich and Concentrated:** These clusters are more compact and concentrated; M38 is in this class.
- f. **Fairly Rich and Concentrated:** This group is as compact as the e group, yet with more stars; M37 falls in this group.
- g. **Considerably Rich and Concentrated:** This group is similarly compact as group f, yet contains more stars; the Jewel Box (NGC 4755) is in this class.

Shapley immediately found that his classification system was not complete because it was dependent on stellar density and distance of the group. With this knowledge he further divided the group into the color of the stars in the cluster. The Pleiades type, where the stars were mainly Main Sequence, and the Hyades type, where the stars were older yellow and red spectra. Even with the later addition, the Shapley classification system has fallen out of favor because of the astrophysical limitations; it is dependent on density and concentration.

Robert J. Trumpler devised a classification system that has stood the test of time. It is superior to many of the prior classification systems because it incorporates specific features of an open cluster. Trumpler classified the clusters based on criteria that were independent of distance. By taking into account the independent features of the cluster, he was able to more accurately assess the nature of the cluster. This advantage of the Trumpler system over the others makes it the most widely used classification system; in this program, the Trumpler system of classification will be used.

Today, astronomers have an excellent grasp on the origins and astrophysics of open clusters. The main commonality shared by all open clusters is their gravitational attraction; stars in open clusters gravitationally attract each other thus holding the stars within close proximity. In order to explain the mutual attraction, it has been concluded that open clusters are born in nebulae and are thus not formed independently, but in vast numbers where they concentrate into open clusters. The mystery that still surrounds open clusters involves their demise. Astronomers are eager to learn if external forces, from a nearby galaxy or star, influence the dynamics of the clusters and if so, what happens.

# Trumpler Classification System

In order to complete this program, the observer must classify the selected open clusters based on the Trumpler classification system. This system is the most widely used and accepted classification of open clusters because it independently assesses the nature of the cluster. Trumpler identified three features in an open cluster:

Degree of Concentration:

- I. Detached clusters with strong central concentration.
- II. Detached clusters with little central concentration.
- III. Detached cluster with no noticeable concentration.
- IV. Clusters not well detached, but has a strong field concentration

Range of Brightness:

- 1. Most of the cluster stars are nearly the same apparent brightness.
- 2. A medium range of brightness between the stars in the cluster.
- 3. Cluster is composed of bright and faint stars.

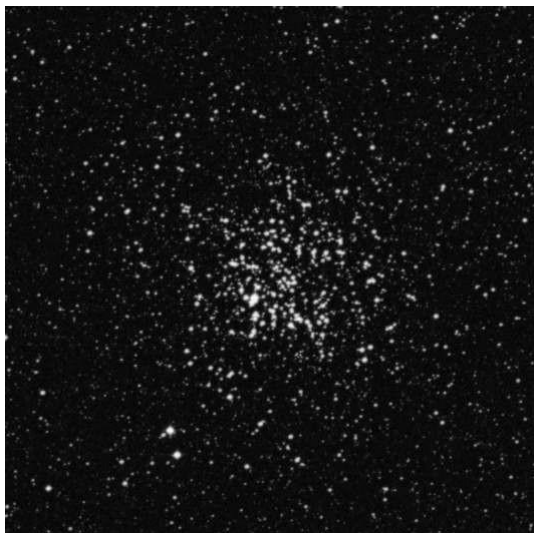
Number of Stars in Cluster

- p. Poor clusters with less than 50 (fifty) stars.
- m. Medium rich cluster with 50-100 stars.
- r. Rich clusters with over 100 stars.

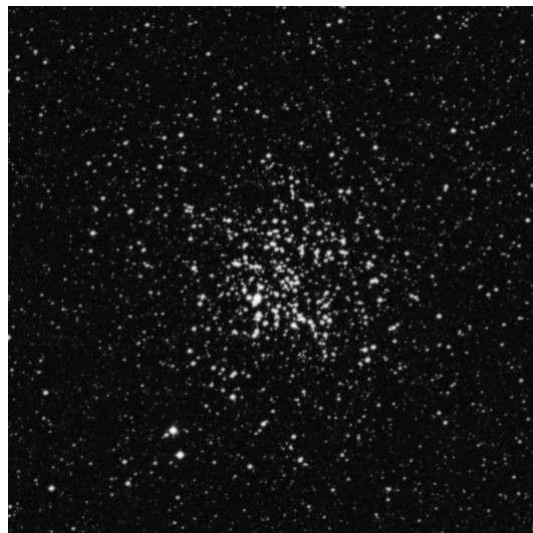
Some open clusters may be in, or are surrounded by nebulosity. Trumpler denoted open clusters with any type of nebulosity (including light and dark nebula) with an “n” at the end of the classification. For example, the official classification for NGC 3293 is I 3 r n because it is imbedded in a nebula. If you find that any of the selected clusters in this program are in or around nebula, denote that in your classification of the cluster.

Since this requirement is needed to complete the program, previous observations of open clusters in this program will not be accepted, unless you classified the cluster under the Trumpler system with you first observed it. If you have already observed all of the open clusters in this program, than you just need to go back and classify the cluster and make a sketch of any 25 of the 125 selected objects.

## Examples of Trumpler Classifications



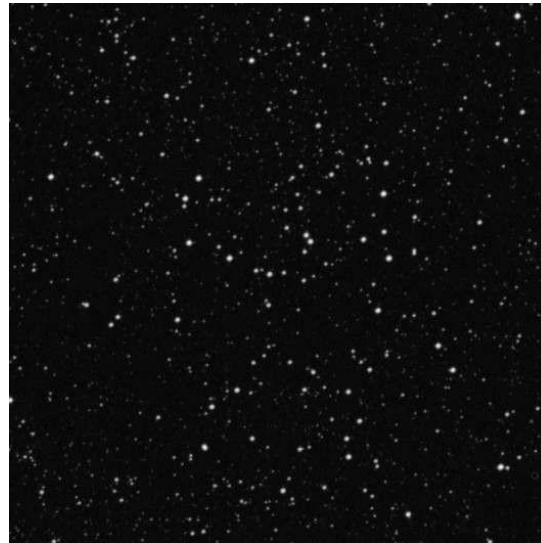
M11, Class: I 2 r



M46, Class: II 2 r



NGC 6664, Class: III 2 m



NGC 6568, Class: IV 1 m

## Open Cluster Catalogs

Most of the catalogs used in this program are more obscure than the NGC and IC catalogs. However obscure these catalogs are, they contain many wonderful objects that are visible in the smallest of telescopes.

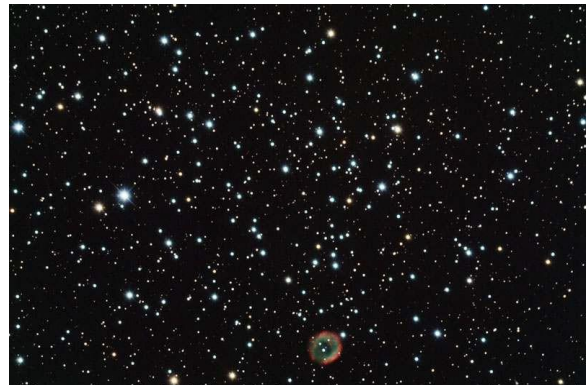
One of the goals of this program is to make the observer aware of the many different catalogs that contain open clusters; not the familiar Messier, Herschel, IC, and even NGC. By observing out of unfamiliar catalogs, the observer will see clusters that are generally overlooked because of their unfamiliar catalog names.

### Catalogs Used in This Program

| Abbreviation | Catalog Name           |
|--------------|------------------------|
| None         | King                   |
| None         | Dolidze                |
| None         | Stock                  |
| None         | Biurakan               |
| None         | Harvard                |
| None         | French                 |
| None         | Tombaugh               |
| Berk         | Berkeley               |
| Tr           | Trumpler               |
| Cr           | Collinder              |
| NGC          | New General Catalogue  |
| IC           | Index Catalogue        |
| Ru           | Ruprecht               |
| Mel          | Melotte                |
| Steph        | Stephenson             |
| DoDz         | Dolidze Dzimselejsvili |
| M            | Messier                |



M11



M46

Courtesy of R. Croman



## Original List: 125 Selected Objects

| Original Open Clusters List |                    |            |            |     |       |                       |     |     |
|-----------------------------|--------------------|------------|------------|-----|-------|-----------------------|-----|-----|
| Catalogue Name              | Other Name         | RA (2000)  | Dec (2000) | Con | V-Mag | Size (') <sup>1</sup> | U12 | U23 |
| Berk 58                     |                    | 00 00 12   | +60 56.5   | Cas | 9.7   | 5.0                   | 35  | 18  |
| Berk 59                     |                    | 00 02 10   | +67 25.2   | Cep | ?     | 10.0                  | 15  | 8   |
| King 13                     |                    | 00 10 10   | +61 11.0   | Cas | ?     | 5.0                   | 15  | 18  |
| Berk 2                      |                    | 00 25 15   | +60 23.3   | Cas | ?     | 2.0                   | 35  | 18  |
| King 14                     |                    | 00 31.9 00 | +63 10     | Cas | 8.5   | 7.0                   | 15  | 8   |
| King 16                     |                    | 00 43.7 00 | +64 11     | Cas | 10.3  | 5.0                   | 16  | 8   |
| NGC 188                     |                    | 00 30 30   | +85 14.5   | Cep | 8.1   | 15.0                  | 1   | 1   |
| NGC 581                     | M103               | 01 33 22   | +60 39.5   | Cas | 7.4   | 6.0                   | 37  | 29  |
| Tr 1                        | Cr 15              | 01 35 40   | +61 17.2   | Cas | 8.1   | 3.0                   | 16  | 29  |
| Cr 463                      |                    | 01 45 45   | +71 48.6   | Cas | 5.7   | 57.0                  | 16  | 17  |
| Stock 4                     |                    | 01 52.7 00 | +57 4      | Per | ?     | 12.0                  | 37  | 29  |
| Cr 26                       | IC 1805            | 02 32 42   | +61 27.4   | Cas | 6.5   | 20.0                  | 17  | 29  |
| Tr 2                        | Cr 29              | 02 36 53   | +55 54.9   | Per | 5.9   | 17.0                  | 38  | 29  |
| NGC 1027                    |                    | 02 42 36   | +61 35.7   | Cas | 6.7   | 15.0                  | 17  | 29  |
| DODZ 1                      | Do-Dzim 1          | 02 47 27   | +17 15.3   | Ari | 7.1   | 7.5                   | 130 | 99  |
| IC 1848                     |                    | 02 51 11   | +60 24.1   | Cas | 6.5   | 18.0                  | 38  | 29  |
| Cr 34                       |                    | 02 59 23.2 | +34 00     | Cas | 6.8   | 24.0                  | 38  | 29  |
| Tr 3                        | Cr 36              | 03 12 00   | +63 11     | Cas | 7.0   | 15.0                  | 18  | 17  |
| Stock 23                    | Pazmino's Cluster  | 03 16 10.8 | +60 06.9   | Cam | ?     | 29.0                  | 38  | 28  |
| NGC 1342                    |                    | 03 31 40   | +37 22.5   | Per | 6.7   | 17.0                  | 94  | 60  |
| IC 348                      |                    | 03 44 34   | +32 09.8   | Per | 7.3   | 8.0                   | 95  | 60  |
| Tombaugh 5                  |                    | 03 47 44   | +59 05.4   | Cam | 8.4   | 15.0                  | 0   | 28  |
| NGC 1444                    |                    | 03 49 27   | +52 39.3   | Per | 6.6   | 4.0                   | 39  | 28  |
| King 7                      |                    | 03 59 10   | +51 46.8   | Per | ?     | 8.0                   | 39  | 28  |
| NGC 1496                    |                    | 04 04 32   | +52 39.7   | Per | 9.6   | 3.0                   | 39  | 28  |
| NGC 1502                    |                    | 04 07 50   | +62 19.9   | Cam | 6.9   | 20.0                  | 18  | 28  |
| NGC 1662                    |                    | 04 48 29   | +10 55.8   | Ori | 6.4   | 12.0                  | 179 | 97  |
| NGC 1746                    |                    | 05 03.6 00 | +23 49     | Tau | 6.1   | 6.1                   | 134 | 77  |
| NGC 1807                    |                    | 05 10 46   | +16 30.8   | Tau | 7.0   | 12.0                  | 180 | 97  |
| NGC 1798                    |                    | 05 11 40   | +47 41.7   | Aur | 10    | 5.0                   | 65  | 42  |
| NGC 1893                    |                    | 05 22 46   | +33 25.2   | Aur | 7.5   | 25.0                  | 97  | 59  |
| NGC 1912                    | M38                | 05 28 43   | +35 51.3   | Aur | 6.4   | 15.0                  | 97  | 59  |
| DODZ 3                      | Do-Dzim 3          | 05 33.5 00 | +26 31     | Tau | ?     | 10.0                  | 135 | 77  |
| Cr 69                       | Lambda Ori Cluster | 05 35.0 00 | +09 56     | Ori | 2.8   | 70.0                  | 180 | 96  |
| NGC 1981                    |                    | 05 35.2 00 | -04 26     | Ori | 4.2   | 4.2                   | 225 | 116 |



| Catalogue Name | Other Name        | RA (2000)  | Dec (2000) | Con | V-Mag | Size (') <sup>1</sup> | U12 | U23 |
|----------------|-------------------|------------|------------|-----|-------|-----------------------|-----|-----|
| DODZ 4         | Do-Dzim 4         | 05 35.9 00 | +25 57     | Tau | ?     | 25.0                  | 135 | 77  |
| NGC 2141       |                   | 06 02 56   | +10 26.8   | Ori | 9.4   | 10.0                  | 181 | 96  |
| NGC 2158       |                   | 06 07 26   | +24 05.8   | Gem | 8.6   | 5.0                   | 136 | 76  |
| NGC 2169       |                   | 06 08 25   | +13 57.9   | Ori | 5.9   | 6.0                   | 182 | 96  |
| NGC 2232       |                   | 06 27 15   | -4 45.5    | Mon | 4.2   | 53.0                  | 227 | 99  |
| NGC 2244       |                   | 06 32 19   | +4 51.4    | Mon | 4.8   | 30.0                  | 227 | 116 |
| NGC 2360       | Carolines Cluster | 07 17 42   | -1538      | CMa | 7.0   | 15.0                  | 16  | 18  |
| Ru 1           |                   | 06 36.4 00 | -14 9      | CMa | ?     | ?                     | 272 | 135 |
| Ru 3           |                   | 06 42 06   | -29 27.2   | CMa | ?     | 3.0                   | 360 | 154 |
| Biurakan 9     | Berk 30           | 06 57 46   | +03 13.7   | Mon | ?     | 3.0                   | 228 | 115 |
| Ru 7           |                   | 06 57 50   | -13 13.2   | CMa | ?     | 3.0                   | 273 | 135 |
| NGC 2353       |                   | 07 14 31   | -10 16.0   | Mon | 7.1   | 18.0                  | 274 | 135 |
| Tr 6           | Cr 145            | 07 26 23   | -24 12.7   | CMa | 10.0  | 6.0                   | 319 | 153 |
| Tr 7           | Cr 146            | 07 27 21   | -23 58.0   | Pup | 7.9   | 5.0                   | 319 | 153 |
| NGC 2422       | M47               | 07 36 36   | -14 29.0   | Pup | 4.4   | 25.0                  | 274 | 135 |
| Mel 71         | Cr 155            | 07 37 30   | -12 03.1   | Pup | 7.1   | 8.0                   | 274 | 135 |
| NGC 2439       |                   | 07 40 46   | -31 41.5   | Pup | 6.9   | 9.0                   | 362 | 171 |
| NGC 2453       |                   | 07 47 35   | -27 11.7   | Pup | 8.3   | 4.0                   | 320 | 153 |
| Tr 9           | Cr 168            | 07 55 40   | -25 53.2   | Pup | 8.7   | 6.0                   | 320 | 153 |
| NGC 2548       | M48               | 08 13 44   | -05 45.0   | Hya | 5.8   | 30.0                  | 275 | 134 |
| NGC 2632       | M44               | 08 40 22   | +19 40.2   | Cnc | 3.1   | 70.0                  | 141 | 74  |
| NGC 2682       | M67               | 08 51 24   | +11 49     | Cnc | 6.9   | 25.0                  | 187 | 94  |
| Dolidze 27     |                   | 16 36.5 00 | -08 56     | Oph | ?     | ?                     | 291 | 127 |
| Tr 26          | Cr 331            | 17 28 29.9 | -29 29.8   | Oph | 9.5   | 7.0                   | 146 | 9.5 |
| Cr 333         |                   | 17 31 31.3 | -34 00.6   | Sco | 9.8   | 8.0                   | 376 | 164 |
| NGC 6383       |                   | 17 34 42.2 | -32 34.9   | Sco | 5.5   | 20.0                  | 376 | 164 |
| Tr 27          | Cr 336            | 17 36 12.7 | -33 29.3   | Sco | 6.7   | 7.0                   | 164 | 6.7 |
| Tr 28          | Cr 337            | 17 36 59   | -32 28.4   | Sco | 7.7   | 6.0                   | 376 | 164 |
| NGC 6416       |                   | 17 44.3 00 | -32 21     | Sco | 5.7   | 5.7                   | 377 | 164 |
| Cr 347         |                   | 17 46 18.9 | -29 20.2   | Sgr | 8.8   | 10.0                  | 377 | 146 |
| IC 4665        |                   | 17 46.2 00 | +05 43     | Oph | 4.2   | 4.2                   | 203 | 86  |
| NGC 6475       | M7                | 17 53 46   | -34 47.1   | Sco | 3.3   | 75.0                  | 377 | 164 |
| NGC 6520       |                   | 18 03 25   | -27 53.5   | Sgr | 7.6   | 5.0                   | 339 | 145 |
| NGC 6530       | NGC 6523          | 18 4 25    | -24 23.2   | Sgr | 4.6   | 15.0                  | 339 | 145 |
| DODZ 9         | Do-Dzim 9         | 18 8.8 00  | +31 32     | Her | ?     | 28.0                  | 116 | 49  |
| Tr 32          |                   | 18 17 10.4 | -13 20.7   | Ser | 12.2  | 12.0                  | 294 | 126 |
| NGC 6604       |                   | 18 18.1 00 | -12 13     | Ser | 6.5   | 6.5                   | 294 | 126 |
| Tr 33          | Cr 378            | 18 24 38.8 | -19 43.7   | Sgr | 7.8   | 6.0                   | 340 | 145 |
| NGC 6649       |                   | 18 33 28.3 | +10 24.1   | Sct | 8.9   | 6.0                   | 295 | 126 |
| Tr 35          | Cr 388            | 18 43 00.5 | -04 13.5   | Sct | 9.2   | 6.0                   | 250 | 105 |

| Catalogue Name | Other Name | RA (2000)  | Dec (2000) | Con | V-Mag | Size (') <sup>1</sup> | U12 | U23 |
|----------------|------------|------------|------------|-----|-------|-----------------------|-----|-----|
| NGC 6694       | M26        | 18 45 15   | -09 23.1   | Sct | 8.0   | 10.0                  | 295 | 125 |
| NGC 6705       | M11        | 18 51 4    | -06 16.2   | Sct | 5.8   | 11.0                  | 295 | 125 |
| NGC 6709       |            | 18 51.5 00 | +10 20     | Aql | 6.7   | 6.7                   | 205 | 85  |
| Ru 146         |            | 18 52 30   | -21 04.9   | Sgr | ?     | 4.0                   | 340 | 145 |
| Berk 80        |            | 18 54 20.6 | -1 13.2    | Aql | ?     | 3.0                   | 250 | 105 |
| Steph 1        |            | 18 54 30.6 | +36 54.0   | Lyr | 3.8   | 40.0                  | 117 | 49  |
| NGC 6716       |            | 18 54 34   | +19 54.5   | Sgr | 7.5   | 10.0                  | 340 | 145 |
| Berk 82        |            | 19 11 20.3 | +13 06.7   | Aql | ?     | 2.5                   | 206 | 85  |
| NGC 6774       |            | 19 16.3 00 | -16 19.5   | Sgr | ?     | ?                     | 296 | 125 |
| NGC 6791       |            | 19 20 52.7 | +37 46.5   | Lyr | 9.5   | 10.0                  | 118 | 48  |
| NGC 6793       |            | 19 23 12.6 | +22 09.5   | Vul | ?     | 7.0                   | 161 | 66  |
| King 25        |            | 19 24.5 00 | +13 42     | Aql | ?     | ?                     | 206 | 85  |
| NGC 6800       |            | 19 27 00   | +25 05.6   | Vul | ?     | 5.0                   | 161 | 66  |
| Berk 47        |            | 19 28 27.3 | +17 22.0   | Sge | ?     | 3.0                   | 162 | 85  |
| NGC 6811       |            | 19 37 09.6 | +46 22.6   | Cyg | 6.8   | 15.0                  | 84  | 33  |
| Cr 401         |            | 19 38 21.7 | +0 20.7    | Aql | 7.0   | 1.0                   | 252 | 105 |
| NGC 6819       |            | 19 41.3 00 | +40 11     | Cyg | 7.3   | 7.3                   | 84  | 48  |
| NGC 6823       |            | 19 43 10   | +23 18.0   | Vul | 7.1   | 7.0                   | 162 | 66  |
| Harvard 20     |            | 19 53 10.3 | +18 21.6   | Sge | 7.7   | 8.0                   | 162 | 66  |
| NGC 6871       |            | 20 06 27   | +35 47.4   | Cyg | 5.2   | 30.0                  | 119 | 48  |
| Biurakan 2     |            | 20 09 14.3 | +35 29.1   | Cyg | 6.3   | 20.0                  | 119 | 48  |
| NGC 6885       | NGC 6882   | 20 12 01   | +26 28.7   | Vul | ?     | 20.0                  | 163 | 66  |
| IC 4996        |            | 20 16 31.7 | +37 38.6   | Cyg | 7.3   | 7.0                   | 119 | 48  |
| Berk 85        |            | 20 18 47   | +37 45.3   | Cyg | ?     | 6.0                   | 119 | 48  |
| Berk 86        |            | 20 20 21.2 | +38 42.0   | Cyg | 7.9   | 7.0                   | 120 | 48  |
| Berk 87        |            | 20 21 35   | +37 23.5   | Cyg | ?     | 10.0                  | 120 | 48  |
| NGC 6910       |            | 20 23 12   | +40 46.7   | Cyg | 7.4   | 10.0                  | 84  | 32  |
| Cr 421         |            | 20 23.3 00 | +41 42     | Cyg | 10.1  | 10.1                  | 84  | 32  |
| Dolidze 9      |            | 20 25 33.4 | +41 54.6   | Cyg | ?     | 3.0                   | 85  | 32  |
| Berk 90        |            | 20 35 16   | +46 50.7   | Cyg | ?     | 3.0                   | 85  | 32  |
| French 1       |            | 21 07 22   | +16 17.9   | Del | ?     | 13.0                  | 210 | 83  |
| IC 1369        |            | 21 12 07   | +47 46.0   | Cyg | 8.8   | 5.0                   | 86  | 32  |
| Berk 55        |            | 21 16 57   | +51 45.5   | Cyg | ?     | 5.0                   | 56  | 19  |
| NGC 7063       |            | 21 24.5 00 | +36 30     | Cyg | 7.0   | 7.0                   | 121 | 47  |
| IC 1396        |            | 21 39.0 00 | +57 30     | Cep | 3.5   | 3.5                   | 57  | 19  |
| NGC 7142       |            | 21 45 09   | +65 46.5   | Cep | 9.3   | 12.0                  | 33  | 9   |
| NGC 7209       |            | 22 05 08   | +46 29.0   | Lac | 7.7   | 15.0                  | 87  | 31  |
| IC 1434        |            | 22 10.5 00 | +52 50     | Lac | 9.0   | 9.0                   | 57  | 19  |
| NGC 7235       |            | 22 12 24   | +57 16.4   | Cep | 7.7   | 6.0                   | 57  | 19  |
| King 9         |            | 22 15 31   | +54 24.6   | Lac | ?     | 3.0                   | 57  | 19  |

| Catalogue Name | Other Name | RA (2000)  | Dec (2000) | Con | V-Mag | Size (') <sup>1</sup> | U12 | U23 |
|----------------|------------|------------|------------|-----|-------|-----------------------|-----|-----|
| Berk 94        |            | 22 22 53   | +55 52.5   | Cep | 8.7   | 3.0                   | 57  | 19  |
| Berk 96        |            | 22 29 51.2 | +55 24.6   | Lac | ?     | 2.0                   | 57  | 19  |
| King 18        |            | 22 52 08   | +58 18.7   | Cep | ?     | 5.0                   | 58  | 19  |
| NGC 7423       |            | 22 55 06.5 | +57 05.7   | Cep | ?     | 5.0                   | 58  | 19  |
| King 10        |            | 22 55.0 00 | +59 10     | Cep | ?     | ?                     | 58  | 19  |
| King 19        |            | 23 08.3 00 | +60 31     | Cep | 9.2   | 9.2                   | 58  | 18  |
| NGC 7510       |            | 23 11 04.2 | +60 34.2   | Cep | 7.9   | 7.0                   | 58  | 18  |
| NGC 7686       |            | 23 30 07   | +49 08.0   | And | 5.6   | 15.0                  | 88  | 30  |
| King 21        |            | 23 49.9 00 | +62 42     | Cas | 9.6   | 9.6                   | 15  | 8   |
| King 12        |            | 23 53.0 00 | +61 57     | Cas | 9.0   | 9.0                   | 15  | 18  |

---

<sup>1</sup> Diameter is in arcminutes minutes

<sup>2</sup> Number refers to page number in Uranometria 2000.0 1<sup>st</sup> Edition

<sup>3</sup> Number refers to page number in Uranometria 2000.0 2<sup>nd</sup> Edition

## Southern List: Additional Selected Objects

| Catalogue Name | Other Name    | RA (2000) | Dec (2000) | Con | V-Mag | Size (') <sup>1</sup> | U1 <sup>2</sup> | U2 <sup>3</sup> |
|----------------|---------------|-----------|------------|-----|-------|-----------------------|-----------------|-----------------|
| Blanco 1       |               | 00 04 07  | -29 50 00  | Scl | 7.2   | 26                    |                 | 76              |
| NGC 7826       |               | 00 05 17  | -20 41 30  | Cet | 12    | ?                     |                 | 141             |
| NGC 1520       |               | 03 57 51  | -76 47 42  | Men | ?     | 5                     |                 | 219             |
| NGC 1498       |               | 04 00 18  | -12 00 54  | Eri | 12    | ?                     |                 | 138             |
| NGC 1557       |               | 04 13 11  | -70 28 18  | Hyi | ?     | 22                    |                 | 212             |
| NGC 1641       |               | 04 35 32  | -65 45 00  | Dor | ?     | 5                     |                 | 212             |
| NGC 1785       |               | 04 58 35  | -68 50 40  | Dor | ?     | 4                     |                 | 212             |
| NGC 1901       |               | 05 18 15  | -68 26 12  | Dor | 8.3   | 4                     |                 | 212             |
| Dolidze 19     |               | 05 23 42  | +08 11 0   | Ori | ?     | 23                    |                 | 96              |
| Collinder 69   |               | 05 35 06  | +09 56 00  | Ori | 2.8   | 52                    |                 | 96              |
| NGC 1976       | The Trapezium | 05 35 16  | -05 23 24  | Ori | 8.2   | 47                    |                 | 116             |
| NGC 1980       |               | 05 35 24  | -05 54 35  | Ori | 8.9   | 15                    |                 | 116             |
| Collinder 70   |               | 05 35 31  | -01 06 00  | Ori | 8.1   | ?                     |                 | 116             |
| NGC 2017       |               | 05 39 17  | -17 50 48  | Lep | ?     | 10                    |                 | 136             |
| NGC 2112       |               | 05 53 45  | +00 24 36  | Ori | 9.6   | 18                    |                 | 116             |
| NGC 2132       |               | 05 55 18  | -59 54 36  | Pic | ?     | 45                    |                 | 201             |
| Platais 5      |               | 06 09 36  | -22 09 06  | Lep | 7.2   | 300                   |                 | 154             |
| NGC 2184       |               | 06 11 13  | -03 26 24  | Ori | 8.3   | 33                    |                 | 116             |
| NGC 2186       |               | 06 12 07  | +05 27 30  | Ori | 8.7   | 5                     |                 | 116             |
| NGC 2204       |               | 06 15 33  | -18 39 54  | CMa | 8.6   | 10                    |                 | 154             |
| NGC 2202       |               | 06 16 51  | +06 00 00  | Ori | 9.8   | 7                     |                 | 96              |
| NGC 2215       |               | 06 20 49  | -07 17 00  | Mon | 8.4   | 8                     |                 | 136             |
| NGC 2225       |               | 06 26 36  | -09 38 18  | Mon | 13.6  | ?                     |                 | 136             |
| NGC 2232       |               | 06 28 01  | -04 50 48  | Mon | 4.2   | 45                    |                 | 116             |
| Collinder 96   |               | 06 30 18  | +02 52 00  | Mon | 7.3   | 12                    |                 | 116             |
| Ruprecht 1     |               | 06 36 25  | -14 10 48  | CMa | 10.7  | 30                    |                 | 66              |
| NGC 2319       |               | 07 00 43  | +03 02 23  | Mon | 10.4  | 16                    |                 | 115             |
| NGC 2323       |               | 07 02 42  | -08 23 00  | Mon | 5.9   | 15                    |                 | 135             |
| Tombaugh 2     |               | 07 03 05  | -20 49 00  | Pup | 12.8  | 3                     |                 | 154             |
| NGC 2335       |               | 07 06 49  | -10 01 42  | Mon | 7.2   | 7                     |                 | 135             |
| Ruprecht 12    |               | 07 07 19  | -28 13 11  | Pup | 9.9   | 20                    |                 | 154             |
| NGC 2506       |               | 08 00 01  | -10 46 12  | Mon | 7.6   | 12                    |                 | 134             |
| NGC 2509       |               | 08 00 48  | -19 03 06  | Pup | 9.3   | 12                    |                 | 153             |

| Catalogue Name | Other Name | RA (2000) | Dec (2000) | Con | V-Mag | Size (') <sup>1</sup> | U1 <sup>2</sup> | U2 <sup>3</sup> |
|----------------|------------|-----------|------------|-----|-------|-----------------------|-----------------|-----------------|
| NGC 2567       |            | 08 18 32  | -30 38 24  | Pup | 11.5  | ?                     |                 | 171             |
| Collinder 185  |            | 08 23 21  | -36 20 00  | Pup | 7.8   | 10                    |                 | 171             |
| NGC 2658       |            | 08 43 27  | -32 39 30  | Pyx | 10.7  | 3                     |                 | 171             |
| Ruprecht 71    |            | 08 49 22  | -46 50 59  | Cmi | 10.7  | 7                     |                 | 186             |
| IC 2488        |            | 09 27 38  | -57 00 00  | Vel | 7.4   | 15                    |                 | 199             |
| Turner 5       |            | 09 32 31  | -36 28 12  | Vel | 8.3   | 45                    |                 | 170             |
| NGC 2982       |            | 09 42 01  | -44 01 12  | Vel | ?     | 12                    |                 | 186             |
| NGC 2995       |            | 09 44 04  | -54 46 48  | Vel | ?     | ?                     |                 | 199             |
| Collinder 213  |            | 09 54 35  | -50 55 11  | Vel | 8.7   | 17                    |                 | 186             |
| NGC 3114       |            | 10 02 36  | -60 07 12  | Car | 4.2   | 35                    |                 | 199             |
| Trumpler 11    |            | 10 04 54  | -61 36 00  | Car | 8.1   | 5                     |                 | 199             |
| NGC 3228       |            | 10 21 22  | -51 43 42  | Vel | 6     | 5                     |                 | 199             |
| NGC 3247       |            | 10 25 51  | -57 55 24  | Car | 10.5  | 1.1                   |                 | 199             |
| IC 2581        |            | 10 27 29  | -57 37 00  | Car | 4.3   | 5                     |                 | 199             |
| IC 2602        |            | 10 42 58  | -64 24 00  | Car | 1.6   | 100                   |                 | 209             |
| NGC 3532       |            | 11 05 39  | -58 45 12  | Car | 3     | 50                    |                 | 198             |
| NGC 3572       |            | 11 10 23  | -60 14 54  | Car | 6.6   | 7                     |                 | 198             |
| Trumpler 18    |            | 11 11 28  | -60 40 00  | Car | 9.6   | 5                     |                 | 198             |
| Stock 13       |            | 11 13 05  | -58 53 00  | Car | 7     | 10                    |                 | 198             |
| NGC 4052       |            | 12 01 12  | -63 13 12  | Cru | 8.8   | 10                    |                 | 209             |
| NGC 4103       |            | 12 06 40  | -61 15 00  | Cru | 7.4   | 6                     |                 | 198             |
| Loden 565      |            | 12 08 06  | -60 43 12  | Cru | 9.7   | 11                    |                 | 198             |
| NGC 4463       |            | 12 29 56  | -64 47 24  | Mus | 7.2   | 6                     |                 | 209             |
| NGC 4609       |            | 12 42 18  | -62 59 42  | Cru | 6.9   | 6                     |                 | 209             |
| NGC 5045       |            | 13 14 09  | -63 23 23  | Cen | 12    | 60                    |                 | 208             |
| Collinder 271  |            | 13 29 54  | -64 12 00  | Cen | 8.7   | 10                    |                 | 208             |
| Trumpler 21    |            | 13 32 14  | -62 48 00  | Cen | 7.7   | 5                     |                 | 197             |
| NGC 5281       |            | 13 46 35  | -62 55 00  | Cen | 5.9   | 8                     |                 | 197             |
| NGC 5359       |            | 14 00 07  | -70 23 23  | Cir | 12.3  | 8                     |                 | 208             |
| NGC 5460       |            | 14 07 27  | -48 20 36  | Cen | 5.6   | 35                    |                 | 183             |
| Alessi 6       |            | 14 40 15  | -66 07 12  | Cir | 8.8   | 45                    |                 | 208             |
| NGC 5749       |            | 14 48 53  | -54 29 54  | Lup | 8.8   | 10                    |                 | 197             |
| NGC 5822       |            | 15 04 22  | -54 24 00  | Lup | 6.5   | 35                    |                 | 196             |
| Harvard 9      |            | 15 33 46  | -53 40 00  | Nor | ?     | ?                     |                 | 196             |
| Johansson 1    |            | 15 46 20  | -52 22 54  | Nor | 9.3   | ?                     |                 | 196             |
| NGC 5999       |            | 15 52 08  | -56 28 24  | Nor | 9     | 3                     |                 | 196             |
| NGC 6025       |            | 16 03 17  | -60 25 54  | Tra | 5.1   | 15                    |                 | 196             |
| NGC 6124       |            | 16 25 20  | -40 39 12  | Sco | 5.8   | 4                     |                 | 165             |
| NGC 6178       |            | 16 35 47  | -45 38 36  | Sco | 7.2   | 5                     |                 | 182             |
| NGC 6281       |            | 17 04 41  | -37 59 06  | Sco | 5.4   | 8                     |                 | 164             |

| Catalogue Name | Other Name | RA (2000) | Dec (2000) | Con | V-Mag | Size (') <sup>1</sup> | U1 <sup>2</sup> | U2 <sup>3</sup> |
|----------------|------------|-----------|------------|-----|-------|-----------------------|-----------------|-----------------|
| IC 4651        |            | 17 24 49  | -49 56 00  | Ara | 6.9   | 10                    |                 | 181             |
| Collinder 333  |            | 17 31 29  | -34 01 12  | Sco | 9.3   | 18                    |                 | 164             |
| NGC 6400       |            | 17 40 12  | -36 57 00  | Sco | 8.8   | 12                    |                 | 164             |
| Collinder 350  |            | 17 48 07  | +01 21 00  | Oph | 6.1   | 45                    |                 | 106             |
| NGC 6514       |            | 18 02 42  | -22 58 18  | Sgr | 6.3   | 30                    |                 | 145             |
| NGC 6546       |            | 18 07 22  | -23 17 48  | Sgr | 8     | 15                    |                 | 145             |
| NGC 6568       |            | 18 12 43  | -21 36 00  | Sgr | 8.6   | 12                    |                 | 145             |
| NGC 6613       |            | 18 19 58  | -17 06 06  | Sge | 6.9   | 7                     |                 | 126             |
| NGC 6639       |            | 18 30 57  | -13 08 59  | Scu | 7.8   | 10                    |                 | 126             |
| IC 4756        |            | 18 39 00  | +05 27 00  | Ser | 4.6   | 40                    |                 | 85              |
| Ruprecht 147   |            | 19 16 40  | -16 17 59  | Sgr | ?     | 60                    |                 | 125             |
| NGC 6863       |            | 20 05 07  | -03 33 18  | Aqu | ?     | ?                     |                 | 104             |
| NGC 6980       |            | 20 52 48  | -05 50 12  | Aqr | ?     | ?                     |                 | 104             |
| NGC 6994       |            | 20 58 55  | -12 38 00  | Aqi | 8.9   | 1.4                   |                 | 123             |
| NGC 7005       |            | 21 01 57  | -12 52 50  | Aqr | ?     | 30                    |                 | 123             |
| NGC 7134       |            | 21 48 55  | -12 58 24  | Cap | ?     | ?                     |                 | 123             |

---

<sup>1</sup> Diameter is in arcminutes minutes

<sup>2</sup> Number refers to page number in Uranometria 2000.0 1<sup>st</sup> Edition

<sup>3</sup> Number refers to page number in Uranometria 2000.0 2<sup>nd</sup> Edition

## Observation Log

Location: Latitude: \_\_\_\_\_ Longitude: \_\_\_\_\_

Catalog Name and Number: \_\_\_\_\_

Date: \_\_\_\_\_ Time: \_\_\_\_\_

Visual: Seeing: \_\_\_\_\_ Transparency: \_\_\_\_\_

Power Used: \_\_\_\_\_

Imaging: Imaging Equipment: \_\_\_\_\_

Image Details: \_\_\_\_\_

Aperture of Telescope: \_\_\_\_\_ Power Used: \_\_\_\_\_

Estimated Trumpler Class: \_\_\_\_\_

Description: \_\_\_\_\_

\_\_\_\_\_

\_\_\_\_\_

Drawing or Image: